

# SWING

# GABLER

THERMOFORM TECHNOLOGY



**ONE  
FOR ALL**

Compact, flexible and adjustable: The SWING is the perfect all-round system for the production of cups, trays, and lids.

System with unique selling point

# Compact all-round talent for flexible thermoforming

Our SWING makes manufacturers more flexible than ever. This all-round system does not only score because of its very small footprint, it can also be refit for the production of most different products – from to-go cups and lids to take-away trays – in just a few easy steps and in the shortest of time. But that is not all: low energy consumption paired with high output power allow cost-efficient production even for small quantities.

## Highest Flexibility

With the SWING, manufacturers can **switch between different products** such as trays, cups, and lids within a very short time and with just a few steps. The **flexible stacking and counting system** allows you to stack products both horizontally and vertically.

## High Productivity

**Forming and cutting tools combined in multiple rows** and high cycle rates ensure a **high product output** of up to 50,000 cups per hour. The **short changeover time** of less than an hour also guarantees minimum downtime.

## Top Class Product Quality

The proven **Trim-in-place (TIP) process** as well as the innovative drive technology enable a continuously high production performance with consistent quality.

## Simple Integration

Thanks to its **compact design**, the SWING takes up very little space, and therefore easily integrates into any production environment.

## Very User-Friendly

The intuitive and simple user interface ensures user-friendly application. The software enables **automatic pre-setting of production parameters**. All work processes and failure messages are logged in order to ensure optimum reproducibility of the process. On the HMI panel you can check all machine functions in real time.

## Highest Efficiency

Thanks to a particularly **low energy consumption** paired with **improved material usage** and **low personnel cost**, the SWING offers economical operation.

Up to  
**50,000**  
cups/hour

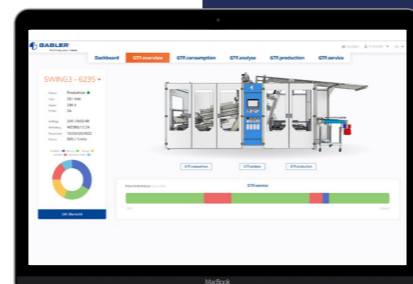
Under  
**45 minutes**  
Product change



## CheckmyGTF

Our well-tried and proven cloud-based remote support is available for the SWING to optimize processes and increase efficiency. This option enables our experienced service technicians to access your machine easily, offering many advantages:

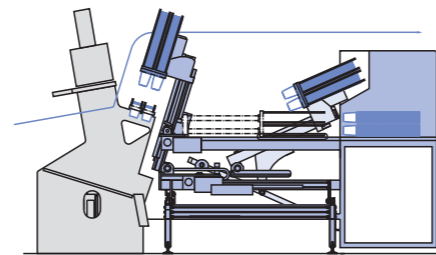
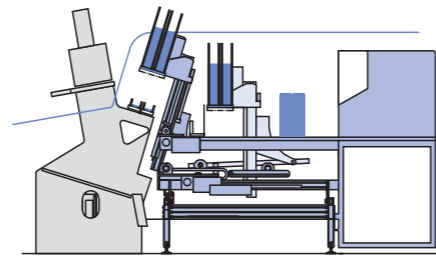
- » Optimum visualization of the production process and the energy consumption
- » Process and drive optimization and increased machine efficiency (+1%)
- » More process safety and reduction of machine downtime
- » Better planning of maintenance and staff resources; lowering work cost



## Versatile

The SWING is suitable for producing a large **variety of products** such as cups, lids, or trays with a height of up to 180 mm. It can process **all common materials incl. PET & biodegradable substances**. It is even possible to process pre-printed film.

- » Cups of all types
- » Lids of different heights, also with cross-hole punching
- » Trays and containers



Above: vertical stacking for the production of lids. Below: horizontal stacking for the production of cups and trays

## Variable counting and stacking mechanism

With the flexibly adjustable counting and stacking mechanism, products can be stacked both **vertically and horizontally**. The changeover can be carried out easily and quickly at any time. Thus, a **rapid change between high and flat products** can be done easily during production.

## TOOL HANDLING

For a rapid and comfortable tool change, the SWING is equipped with an integrated tool change system. This enables flexible and efficient processing of a wide product range with minimum fitting times.

- » Optimum access to tools and machine components
- » Easy-to-understand tool change thanks to an integrated tool change help on the control panel
- » Simple and safe tool handling with the crane integrated as standard as well as quick-release connections for water and forming air
- » Tool change in 45 minutes from production stop to production start



Perfectly set up for all requirements

# All this with the SWING

The SWING has been specifically designed for flexible production of different products in small or medium batches. Due to its clever stacking and counting mechanism, which can be moved both horizontally and vertically, as required by the product, deep products like cups or trays and flat products such as lids can be produced in the same machine.

CUPS

TRAYS

LIDS

Efficient and powerful

# SWING

- » Up to **50,000 cups/hour**
- » **Up to 180 mm** product depth
- » Simple product change **in less than 45 minutes**



### High economic efficiency

Low energy consumption, high material efficiency and low personnel expenses



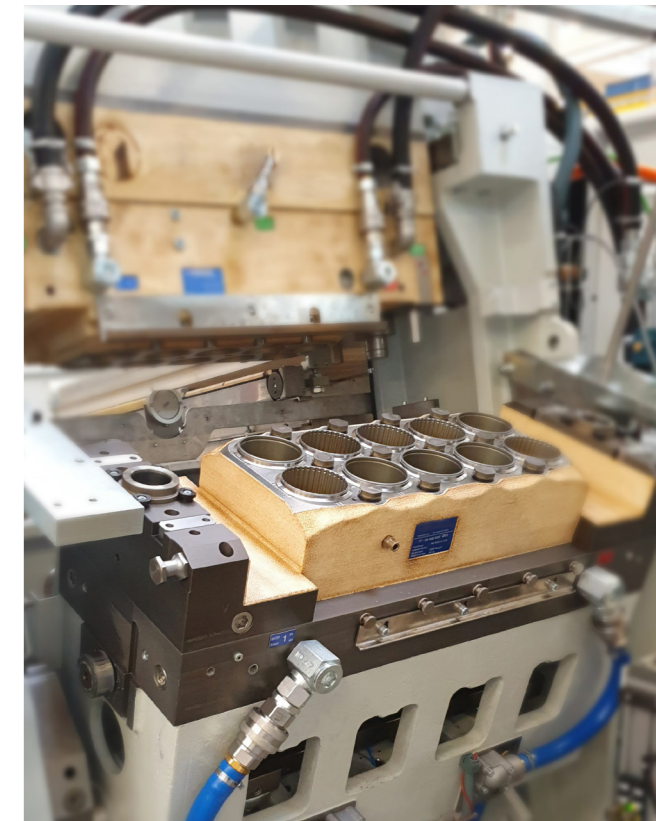
### Small footprint

Can also be integrated into production lines where space is at a premium and/or with inflexible set-ups



### Simple automation

Effortless linking of additional and peripheral devices and IoT-ready



# Why GABLER?



**RELIABLE**

**PARTNER**

A financially sound company, one of the world-market leaders in high end thermoforming technology – with branches all over the world.



**EXPERT**

**SERVICE**

International network of experienced service technicians, rapid help on site, regular maintenance of your plants and fast, world-wide spare parts delivery.



**COMPREHENSIVE**

**EXPERTISE**

Almost 50 years of experience in thermoforming.



**STATE OF THE ART**

**TECHNOLOGY**

Innovations in the fields of pre-stretching technology, tool cooling, machine control, remote support, digitalization, and many more.



**GABLER**  
THERMOFORM TECHNOLOGY

Gabler Thermoform GmbH & Co KG  
Niels-Bohr-Ring 5a  
D 23568 Lübeck  
Tel. +49 (0) 451 3109-0

[www.gabler-thermoform.com](http://www.gabler-thermoform.com) 